

*For Harp & Co.*

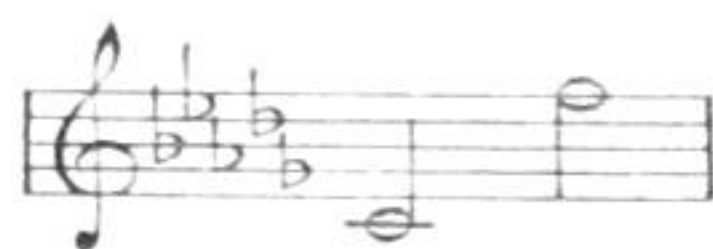
No 1 in B $\flat$



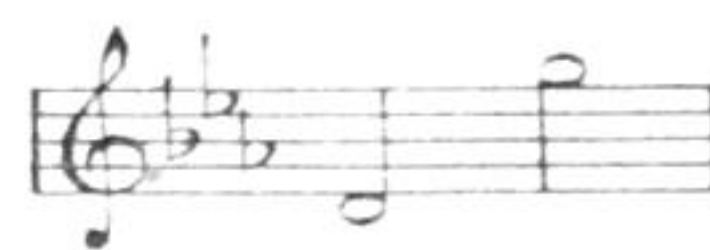
No 2 in C



No 3 in D $\flat$



No 4 in E $\flat$



# LITTLE GREY HOME IN THE WEST



SONG

WORDS BY

D. EARDLEY-WILMOT



MUSIC BY

HERMANN LÖHR

PRICE 1/6 NET CASH.

(60 ¢)

CHAPPELL & CO LTD.

50, NEW BOND STREET, LONDON, W.

NEW YORK:

41, EAST 34TH STREET.

TORONTO:

347, YONGE STREET.

MELBOURNE:

235, FLINDERS LANE.

THIS SONG MAY BE SUNG IN PUBLIC WITHOUT FEE OR LICENSE EXCEPT AT THEATRES AND MUSIC HALLS  
THE PUBLIC PERFORMANCE OF ANY PARODIED VERSION OF THIS SONG IS STRICTLY PROHIBITED  
THE ADAPTATION OF THIS COMPOSITION TO ANY FORM OF MECHANICAL MUSICAL INSTRUMENT  
EITHER FOR PRIVATE OR PUBLIC PERFORMANCE IS STRICTLY PROHIBITED

6219.

Copyright, mcmxi, by Chappell & Co Ltd.

ALSO PUBLISHED AS A VALSE.



## LITTLE GREY HOME IN THE WEST.

When the golden sun sinks in the hills,  
And the toil of a long day is o'er—  
Though the road may be long, in the lilt of a song  
I forget I was weary before.  
Far ahead, where the blue shadows fall,  
I shall come to contentment and rest;  
And the toils of the day will be all charmed away  
In my little grey home of the west.

There are hands that will welcome me in,  
There are lips I am burning to kiss—  
There are two eyes that shine just because they are mine,  
And a thousand things other men miss.  
It's a corner of heaven itself  
Though it's only a tumble-down nest—  
But with love brooding there, why, no place can compare  
With my little grey home in the west.

D. EARDLEY-WILMOT.



# LITTLE GREY HOME IN THE WEST.

## Song.

Words by  
D. EARDLEY-WILMOT.

Music by  
HERMANN LÖHR

**VOICE.**

**PIANO.**

Moderato.

*mf*

*con Q.*

*mf*

When the gold - en sun sinks in the hills, ——— And the

*mf*

toil of a long day is o'er ——— Though the



road may be long, in the lilt of a song I for - get I was wear - y be -

*rall.*

*rall.*

- fore — Far a - head, where the blue sha - dows fall — I shall

*a tempo*

*cresc.*

*a tempo*

*mf*

*cresc.*

come to con - tent - ment and rest; And the toils of the day will be

*ten.*

*f*

*f colla voce*

all charmed a - way In my lit - tle grey home of the west. —

*dim.*

*rit - en.*

*a tempo*

*dim.*

*rit - en.*

*a tempo*



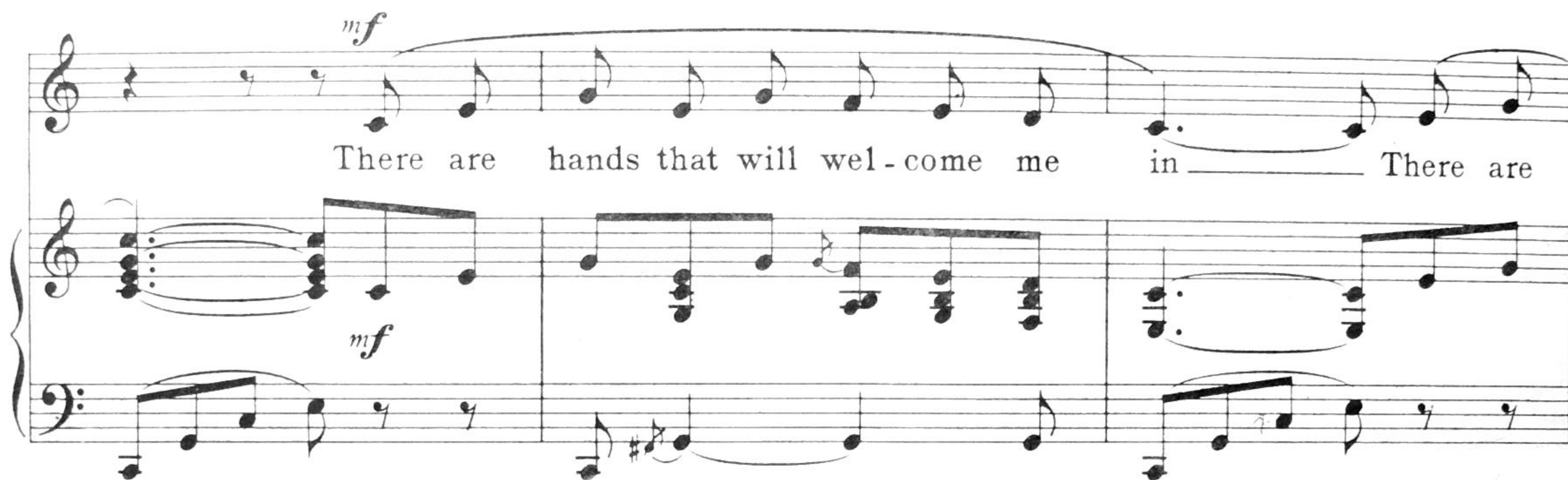


*mf*

8

8

The first system shows a piano introduction. The right hand features a series of chords and eighth notes, while the left hand plays a simple bass line with eighth notes. The dynamic marking *mf* is present.

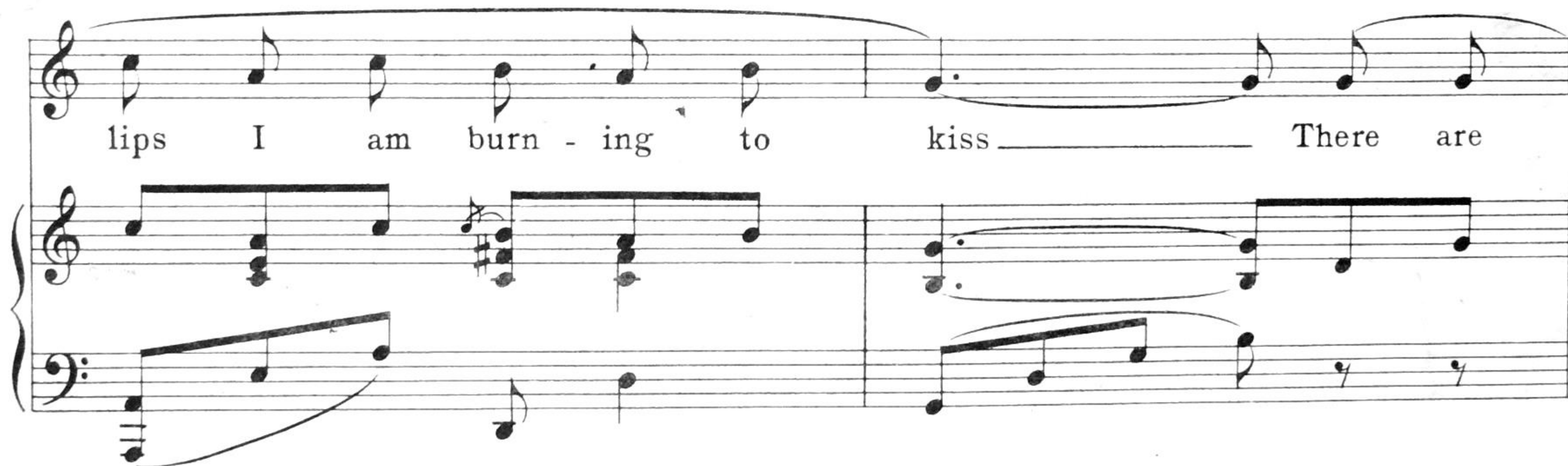


*mf*

There are hands that will wel - come me in \_\_\_\_\_ There are

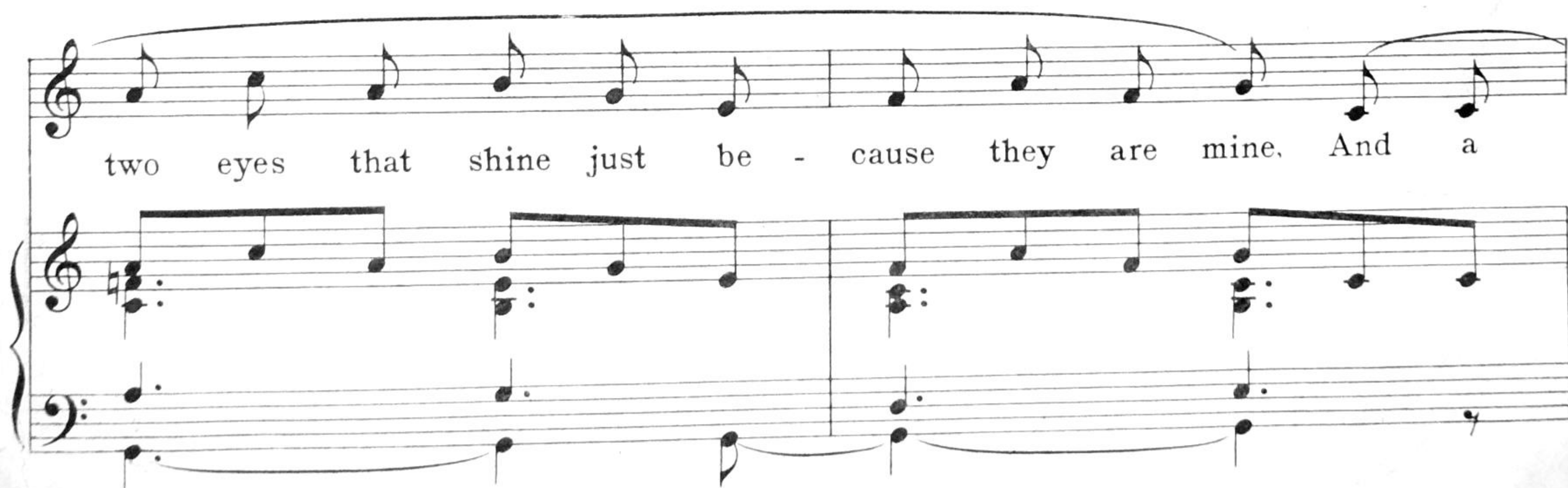
*mf*

The second system begins with the vocal melody. The lyrics "There are hands that will wel - come me in \_\_\_\_\_ There are" are written below the staff. The piano accompaniment continues with chords and moving lines in both hands.



lips I am burn - ing to kiss \_\_\_\_\_ There are

The third system continues the vocal melody with the lyrics "lips I am burn - ing to kiss \_\_\_\_\_ There are". The piano accompaniment provides harmonic support with chords and melodic fragments.



two eyes that shine just be - cause they are mine. And a

The fourth system concludes the vocal phrase with the lyrics "two eyes that shine just be - cause they are mine. And a". The piano accompaniment ends with sustained chords.



thou sand things o - ther men miss \_\_\_\_\_ It's a

*cresc.*  
cor - ner of heav - en it - self \_\_\_\_\_ Though it's

on - ly a tum - ble-down nest, *f* <sup>ten.</sup> But with love brood-ing there, why, no

*dim.* place can com - pare With my *rall.* *molto* lit - tle grey home in the west. \_\_\_\_\_