

№ 1 IN B^b

№ 2 IN C

№ 3 IN D^b

№ 4 IN B^b

№ 5 DUET

SOPRANO
OR
TENOR

ALTO
OR
BARITONE

THE WORLD IS WAITING FOR THE SUNRISE

SONG

WORDS BY

EUGENE LOCKHART

MUSIC BY

ERNEST SEITZ

PRICE ^R 50 CENTS
EXCEPTING CANADA AND FOREIGN COUNTRIES

ALSO PUBLISHED FOR

TWO PART FEMALE VOICES (S.S.)	.15	FOUR PART MIXED VOICES (S.A.T.B.)	.15
THREE PART FEMALE VOICES (S.S.A.)	.15	FOUR PART MALE VOICES (T.T.B.B.)	.15

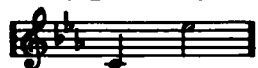
CHAPPELL & Co., Inc.
RKO BUILDING - ROCKEFELLER CENTER
NEW YORK, N.Y.

CHAPPELL & Co., Ltd.
LONDON — PARIS
SYDNEY

PRINTED IN U.S.A.

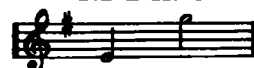
THE GREAT ENGLISH BALLAD OF TODAY

№ 1 IN E \flat



I'll Walk Beside You

№ 2 IN G



Words by
EDWARD LOCKTON

Music by
ALAN MURRAY

Slowly (*with expression*)

VOICE

Piano

mf *mp* *mp* *mp* *ten.* *mp*

walk be - side you through the world to - day, While

dreams and songs and flow - ers bless your way, I'll look in -

allarg. *allarg.*

Copyright MCMXXXVI by Chappell & Co., Ltd.

CHAPPELL & Co. INC., RKO Building, Rockefeller Center, New York, N.Y.

The World Is Waiting For The Sunrise

Ukulele arr. by May Singhi Breen

Words by

EUGENE LOCKHART

SONG

May be had on all

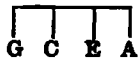
Records, Piano & Word-Rolls

Music by

ERNEST SEITZ

Tune Ukulele

Rather Slowly



* Ami.

Dmi.

Gaug.5

Emi.

C7

Dmi.

mp

Down in the la - zy west rides the moon, Warm as a night_ in

E7

Ami.

Dmi.

Gaug.5

Emi.

C7

June, Stars shimm - 'ring soft in a bed of blue,

Ami.

D7

G7

C

Dmi.

G7

mf

p tranquillo

While I am call - ing and call - ing you. Sweet - ly you_ are

* Letters over UKE diagrams are names of chords adaptable to Banjo or Guitar in original key

Copyright Canada 1919 by Chappell & Co. Ltd.

Copyright 1919 by Chappell & Co. Ltd.

Symbols for Guitar arr. by S. M. Zoltai

dream - ing, As the dawn comes slow - ly stream - ing;

Wa - ken love in your bow - er, Greet our tryst - ing hour. Dear

one the world is

wait - ing for the sun - rise; Ev - - - ry

Ami. *Ami.* *Ami.* *G7* *E7* *Ami.* *E7*

Ami. *Dmi.* *Gaug.5* *Emi.* *C7* *Dmi.* *G7* *Gaug.5*

mf *rit.*

rit.

Ad.

Gaug.5 *Ami.* *Gaug.5 **

Slowly but with a certain swing
espressivo

atempo

C *Ami.* *C* *E7* *F* *G7*

rose is heav - y with dew. The

Chords: C, D7, G7, Gaug.5

thrush on high, his sleep - y mate is

Chords: C, Gaug.5, Ami., C

call - ing And my heart is

Chords: E7, F, G7, C, A7

call - ing you!

Chords: Fmi add D, G7, C, Gaug.5, C

Performance markings: rit., pp.

A NEW SONG BY THE WRITERS OF "IN THE GARDEN OF TO-MORROW"

On Wings Of Memory

Words by
THEKLA HOLLINGSWORTH

Music by
JESSIE L. DEPPEN

Andantino

Piano

The piano introduction is written in a 3/4 time signature with a key signature of one flat (B-flat). It consists of two staves, treble and bass clef. The melody is primarily in the treble clef, featuring a series of chords and moving lines. Dynamics include *mf* and *p*. There are some markings like *rit.* and an asterisk at the end of the first system.

Con moto

Some - times when shad - ows are fall - ing, Dear - est, you

The first system of the vocal and piano accompaniment. The vocal line is in a treble clef with a key signature of one flat. The piano accompaniment is in a grand staff (treble and bass clefs). The lyrics are: "Some - times when shad - ows are fall - ing, Dear - est, you". Dynamics include *p*.

come back to me; From — the dim past re -

The second system of the vocal and piano accompaniment. The vocal line continues with the lyrics: "come back to me; From — the dim past re -". The piano accompaniment continues with chords and moving lines. Dynamics include *p*.

turn - ing On wings of mem - o - ry.

The third system of the vocal and piano accompaniment. The vocal line concludes with the lyrics: "turn - ing On wings of mem - o - ry.". The piano accompaniment continues with chords and moving lines. Dynamics include *p*.

Copyright MCMXXXIX by Chappell & Co. Inc., N. Y. C.

CHAPPELL & CO. INC., R K O Building, Rockefeller Center, New York, N.Y.

THE FAMOUS "BELL" SONG WITH THE HAUNTING MELODY REFRAIN



THE BELLS OF ST MARY'S

SONG

Words by
DOUGLAS FURBER

Music by
A. EMMETT ADAMS

REFRAIN

Bells of St Ma-ry's, Ah! hear they are call-ing, The

Legato

sempre p

young loves- the true loves, Who come from the sea, And

so my be- lov- ed, When red leaves are fall- ing,

The love-bells shall ring out,
Ring out for you and me.

Copyright, 1917 by Ascherberg, Hopwood & Crew, Ltd.

You can obtain a copy of this song from your dealer