

Two  
Songs

By

Margaret Ruthven Lang

Op. 54.

I. "Into my heart"

II. Chimes

High Voice

Low Voice

Price 50 Cents Each

Arthur P. Schmidt,

Boston, Leipzig, New York,

120 Boylston Street.

8 West 40th Street.

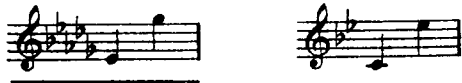
Copyright 1915, by Arthur P. Schmidt.  
International Copyright Secured.  
Public Performance Permitted.

Into my heart an air that kills  
From yon far country blows;  
What are those blue remembered hills,  
What spires, what farms are those?

That is the land of lost content,  
I see it shining plain,  
The happy highways where I went  
And cannot come again.

*A. E. HOUSMAN*

# Into My Heart



A. E. HOUSMAN †)

MARGARET RUTHVEN LANG  
Op. 54, N°1

Very Slowly (♩ = 54) mp

In-to my heart

an air that kills, From yon far coun - try blows; —

What are those blue re-mem-bered hills, What spires, what farms are

†) Words taken from *A Shropshire Lad*  
by A. E. Housman, Published by Mitchell Kennerly, New York

those? \_\_\_\_\_

*poco rit.*

*mf espressivo*

*f*

*poco rit.*

*come prima*  
*mp*

That is the land \_\_\_\_\_ of lost con - tent; \_\_\_\_\_

*mp* *come prima*

I see it shin - ing plain, \_\_\_\_\_ The hap - py high - ways

*f*

*mf*

where I went \_\_\_\_\_ And may not come a - gain, And

*mp* *cresc.*

*f* *mf* *espressivo* *cresc.*

*ped.* \* *ped.* \* *ped.* \*

*poco a poco*

may \_\_\_\_\_ not come, not \_\_\_\_\_ come a -

*poco a poco*

*ped.* \* *ped.* \* *ped.* \*

gain. \_\_\_\_\_

*f* *mf* *espressivo* *p* *pp*

*ped.* \* *ped.* \* *ped.* \*

# Compositions by Margaret Ruthven Lang

## Pianoforte Solos.

Op. 18. Petit Roman en six chapitres. (3B-4B) (Edition Schmidt No. 36) . . . . .	1.00
Op. 18 No. 3. Bal chez Mme. la Princesse. (4B)	65
Op. 21. Rhapsody in Emin. (5) . . . . .	65
Op. 26. Meditation. (2 C) . . . . .	40

## Songs.

Eros. G (d-g) . . . . .	30
Oh what comes over the Sea? A min. (e-f)	30
My Lady Jaqueminot. B (f-g) . . . . .	40
Ojala. F# (f#-f#) . . . . .	30
Nameless Pain. G (e-g) . . . . .	40
Ghosts. A (f-f) . . . . .	30
In the Twilight. E (g-e) . . . . .	30
Song of the rival Maid. D (f#-g) . . . . .	40
Meg Merriles. G min. (d-g) . . . . .	30
In a Garden. F (d-f) . . . . .	30
Deserted. E (e-f#) . . . . .	30
A Spring Song. Emin. (e-f#) . . . . .	30
Op. 6. Three Songs.	
No. 1. Chinese Song. Emin. (c#-e)	40
No. 2. A Bedtime Song. E (d-d#)	40
No. 3. Lament. D (d-d) . . . . .	40
Op. 7. Three Songs of the Night.	
No. 1. Night. B (d#-g) . . . . .	50
No. 2. Slumber Song. G (d#-f#)	40
No. 3. The Harbor of Dreams. E (d#-f#)	40
Op. 8. Three Songs of the East.	
No. 1. Oriental Serenade. Emin. (c-f#)	30
No. 2. Christmas Lullaby. F min. (f-e)	40
No. 3. A Poet Gazes on the Moon. C min. (c-eb) . . . . .	40
Op. 9. No. 1. Heliotrope. F (e-g) . . . . .	40
No. 2. Spinning Song. D (d-f#) . . . . .	40
No. 3. The Sky Ship. A (db-f) . . . . .	30
No. 4. Betrayed. A min. (e-a) . . . . .	40
Op. 15. Five Songs for Sop. or Ten. (Edition Schmidt No. 32) . . . . .	75
King Olaf's Lilies - The Dead Ship - April Weather - The Garden of Roses - Spinning Song.	
Op. 16. Dear Land of mine. E (b-f) . . . . .	60
Op. 19. Five Norman Songs.	
No. 1. My Turtle Dove. Eb (c-d) . . . . .	40
No. 2. In the Greenwood. Db (db-eb)	40
No. 3. The Grief of Love. F (a-a)	30
No. 4. Before my Lady's Window. Eb (bb-eb) . . . . .	40
No. 5. Desire. A (bb-eb) . . . . .	65

## Men's Voices.

Op. 4. Maiden and the Butterfly . . . . .	16
Op. 5. The Jumbies. Baritone Solo, Chorus and two Pianos . . . . .	60
Here's a health to one I lo'e dear . . . . .	10
Alastair Mac Alastair. . . . .	12
Five Nonsense Songs.	
No. 1. The Old Man who said "Well!" . . . . .	10
No. 2. The Old Man in a Tree . . . . .	15
No. 3. The Young Lady of Parma. . . . .	10
No. 4. The Old Person of Ware. . . . .	15
No. 5. The Old Man with a Gong. . . . .	15

## Women's Voices.

Op. 43. The Lonely Rose . . . . .	25
-----------------------------------	----

## Op. 20. Six Scotch Songs.

No. 1. Bonnie Bessie Lee. Eb (eb-g)	40
No. 2. My ain dear Somebody. F (f-f)	30
No. 3. Maggie Away. Eb (db-g) . . . . .	30
No. 4. Love's fear. G (e-f#) . . . . .	30
No. 5. Menie. D (d-f#) . . . . .	30
No. 6. Jock o' Hazeldean. G (d-f#).	30

## Op. 22. Irish Love Song. Two keys. each

Op. 27. The King is Dead. D (a-d or e) . . . . .	40
--	----

## Op. 28. No. 1. A Song for Candlemas. A (e-f)

No. 2. Arcadie. G (d-e) . . . . .	40
No. 3. My Garden. A (e-g) . . . . .	40

## Op. 34. An Irish Mother's Lullaby. 2 keys ea.

Op. 37. Six Songs.	
--------------------	--

No. 1. A Thought. Db (d-f) . . . . .	40
No. 2. Out of the Past. Db (d-f) . . . . .	40
No. 3. The Hills o' Skye. D (b-f) . . . . .	40
No. 4. Summer Noon. A (e-e) . . . . .	50
No. 5. Tryste Noel. F (f-f). Eb (e-e) . . . . .	50
No. 6. Northward. Eb (b-f) . . . . .	50

## Op. 38. Four Songs.

No. 1. Orpheus. Eb (e-g) . . . . .	50
No. 2. Sleepy-Man. G (d-f) . . . . .	60
No. 3. The Span o' Life. Eb (e-g)	60
No. 4. Song in the Songless. F (e-g).	50

## Op. 39. Songs for Lovers of Children.

(Edition Schmidt No. 79) . . . . .	1.00
------------------------------------	------

Merry Christmas - Just Because - In the  
Night - Morning - Evening - The Sand-  
man - Tomorrow - Three Ships.

## Op. 40. Four Songs

No. 1. Somewhere. G (f-g) . . . . .	50
No. 2. Day is Gone. A (e-g) . . . . .	50
No. 3. The Bird. F# (f-g#) . . . . .	50
No. 4. Love is Everywhere. F (e-g)	60

## Op. 41. A Song of the Lilac. Ab (eb-g)

Op. 42. Nonsense Rhymes and Pictures.	
---------------------------------------	--

(Edition Schmidt No. 105) . . . . . 1.00

## Op. 43. More Nonsense Rhymes and Pictures.

(Edition Schmidt No. 124) . . . . . 1.00

## Album of Ten Selected Songs. (Edition Schmidt No. 27)

. . . . . 1.00

Ghosts - In the Twilight - In a Garden -  
A Bedtime Song - Lament - Night - The  
Harbor of Dreams - Christmas Lullaby -  
A Poet gazes on the Moon - Betrayed.

## Op. 50. Four Songs.

No. 1. A Garden is a lovesome thing . . . . .	Low	50
No. 2. A Song of the Spanish Gypsies . . . . .	Voice	30
No. 3. Snowflakes . . . . .	High	50
No. 4. There would I be . . . . .	Voice	50

## Dart Songs.

Op. 49. The Wild Brier. . . . .	12
Op. 48. Song of the Three Sisters . . . . .	15
Four Nonsense Songs.	
No. 1. The Old Lady of France . . . . .	10
No. 2. The Old Person of Skye . . . . .	10
No. 3. The Person of Filey . . . . .	10
No. 4. The Old Man of Dumbree . . . . .	10

## Mixed Voices.

Op. 24. Bonnie ran the Burnie down. . . . .	12
Two Nonsense Songs.	
No. 1. The Old Man with a Beard . . . . .	12
No. 2. The Old Person of Cassel. . . . .	12

## Mixed Voices - Sacred.

Op. 34. Te Deum in Eb . . . . .	16
---------------------------------	----

Arthur P. Schmidt, Boston \* Leipzig \* New York.

Two  
Songs  
By

Margaret Ruthven Lang

Op. 54.

- I. "Into my heart"  
II. Chimes

High Voice      Low Voice

Price 50 Cents Each

Arthur P. Schmidt,  
Boston,      Leipzig,      New York,  
120 Boylston Street.      8 West 40th Street.

Copyright 1915, by Arthur P. Schmidt.  
International Copyright Secured.  
Public Performance Permitted.

### Chimes

Brief, on a flying night,  
From the shaken tower,  
A flock of bells take flight,  
And go with the hour.

Like birds from the cote to the gales,  
Abrupt— O hark!  
A fleet of bells set sails,  
And go to the dark.

Sudden the cold airs swing.  
Alone, aloud,  
A verse of bells takes wing  
And flies with the cloud.

*ALICE MEYNELL*



# Chimes

\*) ALICE MEYNELL

MARGARET RUTHVEN LANG  
Op. 54, N<sup>o</sup> 2



Moderato (♩ = about 69)

*p*

Brîef, — on a fly - ing

*Steadily; without dragging.*

*mp*

Tea \* Tea \* Tea \* Tea \* Tea \* Tea \* Tea \* Tea \* Tea \*

night, — From the shak - en tow'r, — A flock of

Tea \* Tea \* Tea \* Tea \* Tea \* Tea \* Tea \* Tea \*

bells take flight, — And go with the hour. —

*mf*

Tea \* Tea \* Tea \* Tea \* Tea \* Tea \* Tea \* Tea \*

\*) Words taken from *Collected Poems of Alice Meynell*  
Published by Charles Scribner's Sons, New York

Copyright 1915 by Arthur P. Schmidt  
International Copyright Secured  
Public Performance Permitted

A. P. S. 10579-4

May 1939 Gift of Dr. Charles L. Swallow

*f* Like birds from the cote to the gales, — *mp* Ab-rupt — O hark! a fleet of

*f* *m.g. m.g.m.g.* *m.g. m.g.m.g.* *simile* *mp colla voce*

Dynamic markings: *f*, *mp*, *f*, *mp*. Performance instructions: *m.g. m.g.m.g.*, *simile*, *colla voce*.

bells set — sails, — And go to the dark, And

*mp*

Dynamic markings: *mp*, *mp*. Performance instruction: *colla voce*.

go to the dark. — Sud - den the

*p* *mf* *p* *ppp* *f*

Dynamic markings: *p*, *mf*, *p*, *ppp*, *f*, *mf*.

cold airs swing. A - lone, a - loud,

*mp* *p*

*mp* *mf*

♯<sub>2</sub> ♯<sub>3</sub> ♯<sub>4</sub> ♯<sub>5</sub> ♯<sub>6</sub> ♯<sub>7</sub> ♯<sub>8</sub> ♯<sub>9</sub> ♯<sub>10</sub> ♯<sub>11</sub> ♯<sub>12</sub>

A verse of bells takes wing And flies with the

*very distinctly* *mp* *m.g.* *mp* *in strict time to the end*

♯<sub>2</sub> ♯<sub>3</sub> ♯<sub>4</sub> ♯<sub>5</sub> ♯<sub>6</sub> ♯<sub>7</sub> ♯<sub>8</sub> ♯<sub>9</sub> ♯<sub>10</sub> ♯<sub>11</sub> ♯<sub>12</sub>

cloud.

*mp* *p* *mf* *p* *ten. mf* *p* *m.g.*

*f* *ten. mf*

♯<sub>2</sub> ♯<sub>3</sub> ♯<sub>4</sub> ♯<sub>5</sub> ♯<sub>6</sub> ♯<sub>7</sub> ♯<sub>8</sub> ♯<sub>9</sub> ♯<sub>10</sub> ♯<sub>11</sub> ♯<sub>12</sub>

# Compositions by Margaret Ruthven Lang

## Pianoforte Solos.

Op. 18. Petit Roman en six chapitres. (3B-4B) (Edition Schmidt No. 36) . . . . .	1.00
Op. 18 No. 3. Bal chez Mme. la Princesse. (4B)	65
Op. 21. Rhapsody in Emin. (5)	65
Op. 26. Meditation. (2 C)	40

## Songs.

Eros. G (d-g)	30
Oh what comes over the Sea? A min. (e-f)	30
My Lady Jaqueminot. B♭ (f-g)	40
Ojala. F♯ (f♯-f♯)	30
Nameless Pain. G (e-g)	40
Ghosts. A♭ (f-f)	30
In the Twilight. E (g-e)	30
Song of the rival Maid. D (f♯-g)	40
Meg Merriles. G min. (d-g)	30
In a Garden. F (d-f)	30
Deserted. E (e-f♯)	30
A Spring Song. Emin. (e-f♯)	30
Op. 6. Three Songs.	
No. 1. Chinese Song. Emin. (c♯-e)	40
No. 2. A Bedtime Song. E (d-d♯)	40
No. 3. Lament. D (d-d)	40
Op. 7. Three Songs of the Night.	
No. 1. Night. B (d♯-g)	50
No. 2. Slumber Song. G (d♯-f)	40
No. 3. The Harbor of Dreams. E (d♯-f♯)	40
Op. 8. Three Songs of the East.	
No. 1. Oriental Serenade. Emin. (c-f♯)	30
No. 2. Christmas Lullaby. F min. (f-e)	40
No. 3. A Poet Gazes on the Moon. C min. (c-e♭)	40
Op. 9. No. 1. Heliotrope. F (e-g)	40
No. 2. Spinning Song. D (d-f♯)	40
No. 3. The Sky Ship. A♭ (d♭-f)	30
No. 4. Betrayed. A min. (e-a)	40
Op. 15. Five Songs for Sop. or Ten. (Edition Schmidt No. 32)	75
King Olaf's Lilies — The Dead Ship — April Weather — The Garden of Roses — Spinning Song.	
Op. 16. Dear Land of mine. E (b-f)	60
Op. 19. Five Norman Songs.	
No. 1. My Turtle Dove. E♭ (c-d)	40
No. 2. In the Greenwood. D♭ (d♭-e♭)	40
No. 3. The Grief of Love. F (a-a)	30
No. 4. Before my Lady's Window. E♭ (b♭-e♭)	40
No. 5. Desire. A♭ (b♭-e♭)	65

## Men's Voices.

Op. 4. Maiden and the Butterfly	16
Op. 5. The Jumbies. Baritone Solo, Chorus and two Pianos	60
Here's a health to one I lo'e dear	10
Alastair Mac Alastair	12
Five Nonsense Songs.	
No. 1. The Old Man who said "Well!"	10
No. 2. The Old Man in a Tree	15
No. 3. The Young Lady of Parma	10
No. 4. The Old Person of Ware	15
No. 5. The Old Man with a Gong	15

## Women's Voices.

Op. 43. The Lonely Rose	25
-------------------------	----

## Op. 20. Six Scotch Songs.

No. 1. Bonnie Bessie Lee. E♭ (e♭-g)	40
No. 2. My ain dear Somebody. F (f-f)	30
No. 3. Maggie Away. E♭ (d♭-g)	30
No. 4. Love's fear. G (e-f♯)	30
No. 5. Menie. D (d-f♯)	30
No. 6. Jock o' Hazeldean. G (d-f♯)	30

## Op. 22. Irish Love Song. Two keys. each

Op. 27. The King is Dead. D (a-d or e)	40
Op. 28. No. 1. A Song for Candlemas. A♭ (e-f)	40
No. 2. Arcadie. G (d-e)	40
No. 3. My Garden. A♭ (e-g)	40

## Op. 34. An Irish Mother's Lullaby. 2 keys ea.

Op. 37. Six Songs.	
No. 1. A Thought. D♭ (d-f)	40
No. 2. Out of the Past. D♭ (d-f)	40
No. 3. The Hills o' Skye. D (b-f)	40
No. 4. Summer Noon. A♭ (e-e)	50
No. 5. Tryste Noël. F (f-f). E♭ (e-e)	50
No. 6. Northward. E♭ (b-f)	50

## Op. 38. Four Songs.

No. 1. Orpheus. E♭ (e-g)	50
No. 2. Sleepy-Man. G (d-f)	60
No. 3. The Span o' Life. E♭ (e-g)	60
No. 4. Song in the Songless. F (e-g)	50

## Op. 39. Songs for Lovers of Children.

(Edition Schmidt No. 79) . . . . . 1.00

Merry Christmas — Just Because — In the  
Night — Morning — Evening — The Sand-  
man — Tomorrow — Three Ships.

## Op. 40. Four Songs

No. 1. Somewhere. G (f-g)	50
No. 2. Day is Gone. A (e-g)	50
No. 3. The Bird. F♯ (f-g♯)	50
No. 4. Love is Everywhere. F (e-g)	60

## Op. 41. A Song of the Lilac. A♭ (e♭-g)

Op. 42. Nonsense Rhymes and Pictures. (Edition Schmidt No. 105)	1.00
--	------

## Op. 43. More Nonsense Rhymes and Pictures.

(Edition Schmidt No. 124) . . . . . 1.00

## Album of Ten Selected Songs. (Edition Schmidt No. 27) . . . . . 1.00

Ghosts — In the Twilight — In a Garden —  
A Bedtime Song — Lament — Night — The  
Harbor of Dreams — Christmas Lullaby —  
A Poet gazes on the Moon — Betrayed.

## Op. 50. Four Songs.

No. 1. A Garden is a lovesome thing . . . . .	Low	50
No. 2. A Song of the Spanish Gypsies . . . . .	Voice	30
No. 3. Snowflakes . . . . .	High	50
No. 4. There would I be	Voice	50

## Dart Songs.

Op. 49. The Wild Brier	12
Op. 48. Song of the Three Sisters	15
Four Nonsense Songs.	
No. 1. The Old Lady of France	10
No. 2. The Old Person of Skye	10
No. 3. The Person of Filey	10
No. 4. The Old Man of Dumbree	10

## Mixed Voices.

Op. 24. Bonnie ran the Burnie down	12
Two Nonsense Songs.	
No. 1. The Old Man with a Beard	12
No. 2. The Old Person of Cassel	12

## Mixed Voices — Sacred.

Op. 34. Te Deum in E♭	16
-----------------------	----

Arthur P. Schmidt, Boston \* Leipzig \* New York.